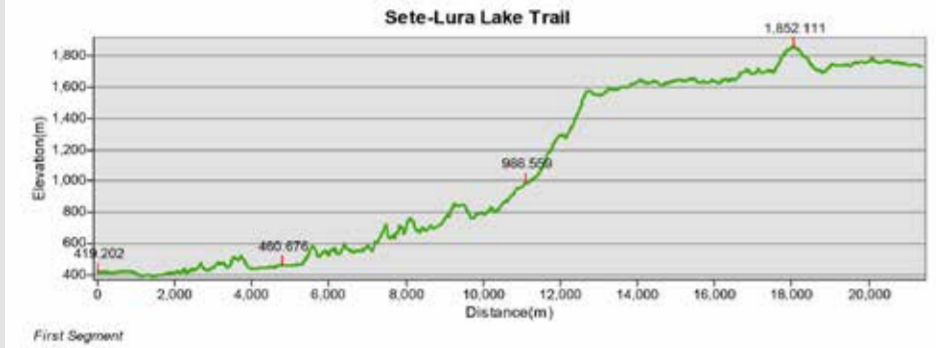


SETA - LURA LAKES



Sete - Lura Lakes Trail:

The 21.5 km trail begins in Arras village and ends at the lakes of Lura. The hike takes approximately 5-6 hours and the level of difficulty is rated as moderate. From Arras after 500 m, there is a road that leads to Sine village where the Kastriot Museum is located. At Seta bridge, the trail follows the river to the left where there is a nice canyon breeze. After 300-400 m, the trail reaches a junction near Cezmat. Continue hiking along the same path for 1.5 km until reaching Sopanike Spring and Cave. From the spring, continue to the canyon where after 300 m is the hydroelectric power station and a short distance later is the Throat of Sete (Sheu i Thate). The Throat of Sete is divided into two gorges with steep slopes. One gorge goes south-west towards the Plaj Valley, which continues to the Gorge of Zhur finishing near the Stelus Castle. The second gorge continues west to the village of Gurë-Lurë, which finishes at Lura Lakes. From the Seven Ice Lakes there are several options, one option is to return to Gjalicat of the Cidhën village, and another options is to go to Fushë-Lurë from the lakes.



Flower Lake of Lura

Flower Lake is a glacial lake with an area of about 45 hectares and is located in Lura National Park 1600 meters above sea level. It is known for the white lilies that bloom in June.

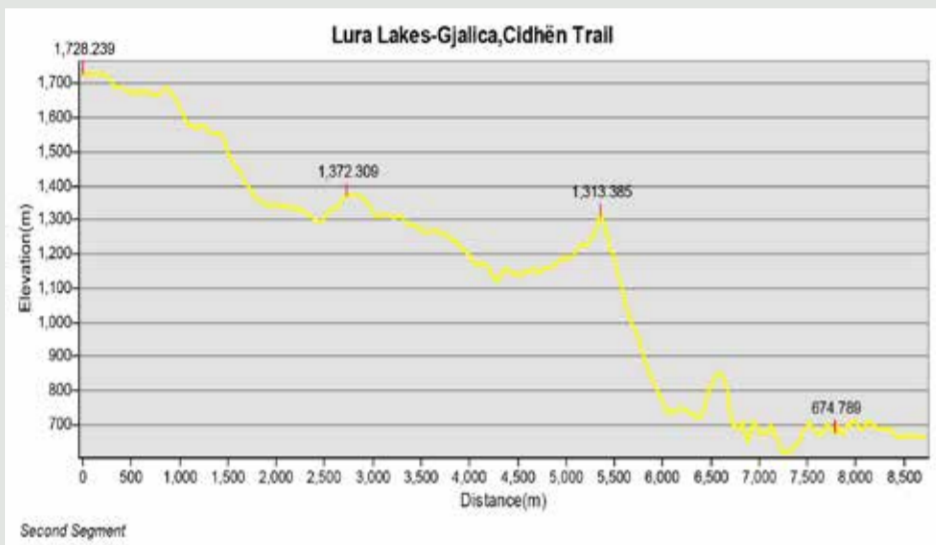
Mare's Field

Located 155m above sea level in Lura National Park. It was formed from a glacial lake after its waters receded. The name originates from the animals that graze in this field.



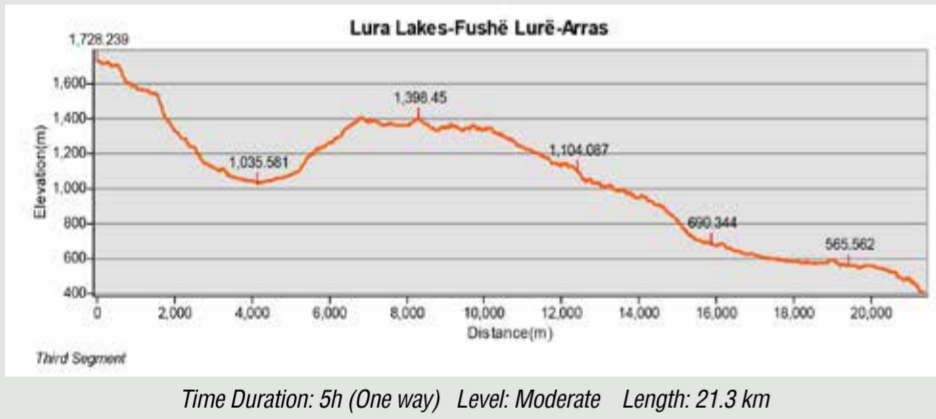
Black Lake of Lura

Black Lake is located at an altitude of 1630 meters above the Lura's Crown, located in a large glacial compound garden. It is a glacial lake with an area of about 8 hectares. The lake's name originates from the deep, dark waters.



Lura Lakes - Gjalica, Çidhën Trail

The 8.7 km trail begins at Lura Lakes and ends in Cidhën village. The hike takes approximately 2-3 hours and the level of difficulty is rated as moderate. Note: Do not attempt this trail if you have a fear of heights.



Lura Lakes - Fushë Lurë-Arras Trail

The 21.3 km trail begins Lura Lakes and ends at Arras. The hike takes approximately 5 hours and the level of difficulty is rated as moderate. The trail follows an unpaved road most of the time.



Great Lake of Lura

Located in Lura National Park at an altitude of over 1,600 meters. It is a glacial lake with an area of about 12 hectares. The crystal clear water is covered with large white lilies in the summer. It is rich in a vibrant diverse world and forms an interesting ecosystem of alpine lakes.

Zef Daci Tower

The Zef Daci Tower, built 100 years ago, is located in the center of the village of Fushë-Lurë. It is three stories high and was built with stones and limestone. Unlike other towers and homes, this tower has its entrance on the north side and the roof of the tower is covered with shingles, a rare feature in Albania.



Selman Tolles Tower

The 18th century Selman Tolles Tower is located in the center of the village of Fushë-Lurë. This tower has great architectural value. The building is three stories high and built with stone and limestone, typical for the area. Each floor of the home serves a different purpose: the first floor was for the servants, the second floor was for the family, and the third floor was for guests. On the exterior corners of the tower and around the door and windows are square-shaped stones designed to make the building appear more attractive.



Kastriot Museum

The museum is located in Sinë village and houses artifacts from the House of Kastrioti, an Albanian noble family prominent during the 14th and 15th centuries who ruled over this region. One notable family member was George Kastriot Skanderbeg, a military commander who led a rebellion against the Ottoman Empire.

Sopanike Spring and Cave

It is located near the village of Cidhën, at a height of 400 m above sea level. The spring originates from a mostly unexplored limestone cave. The water flows at a rate of 150 liters per second of clean and cold water.



Seta Canyon (Big and Little Throa)

The Big Throat is located in the middle section of the Black River, at 380 m above sea level. This limestone canyon is 1.3 km long, 6 m wide, and 50 m deep and it has sharp slopes. The Little Throat is located in the middle section of the Setes, a branch of the Black River, at 700 meters above sea level. The canyon is comprised of limestone and was formed by the erosive activity of the river. It is about 1.5 kilometers long, 150 meters deep, and about 4-7 meters wide and has sharp slopes.

The Home of Dom Nikoll Kacorri

Located in the village of Krej Lurë, this 138 year old home and museum was the birthplace of the renowned Dom Nikoll Kacorri, a signatory of Albania's Declaration of Independence and the founder of the Albanian alphabet. For these and other achievements, Dom Nikoll was awarded the 1st Class Freed Order and the Gjergj Kastrioti Skënderbeu Order.



Cidhna's plane

It is located in Cidhne village, in Diber district, 600 m above the sea level. It represents a dangling plane of wood. It has an irregular and extended form, 28 m high, skid's diameter is 130 cm above 360 cm. It has 40 branches that form a crown with a perimeter of 39 m. It is preserved in medium conditions.



Rusi's Cave

Located near village Grykë Nokë at 710m above sea level. This limestone cave is largely unexplored. The known part is 10-15m long, about 2m wide, and 2m high.

Lashkize Castle

The castle is located in the village of Lashkize and dates back to 1565. The castle was built with stones and limestone and has a simple rectangular design. The surrounding walls have a circumference of about 114 linear meters, and the height of the tower walls is 0.3 meters and the width is about 0.8 meters.



Professional guides are available for all trails in the Diber region. Guesthouses and camping grounds are located near the trails. Please contact the TIC for an up-to-date list of guides and specialty accommodations.

Thanks to the "Tourism as a Leading Edge" Program, in March 2017, the Albania Local Capacity Development Foundation (ALCDF) partnered with the Municipality of Diber and the Local Action Group, Diber Tourism, to implement "Diber: Trails & Tradition" (D2T), a \$750,000 grant funded by USAID in collaboration with the Swedish Embassy in Tirana.

The three-year project's aim is to develop sustainable tourism in the Diber region of Albania by focusing on its three strategic objectives: (1) to strengthen the enabling environment, (2) to increase the workforce capabilities, and (3) to design, develop and promote integrated agritourism products. By April 2020, D2T envisions an increase in employment and incomes based on an increased number of tourists in Diber and the quality of their experience.

Through partnerships with businesses and local government, the project works on developing and marketing eco-friendly, natural, cultural and agritourism attractions, such as hiking and biking trails; improve traditional guesthouses and villages; introduce self-sustaining energy and waste management systems; improve tourist infrastructure; and train local tour guides.

ABOUT, DIBER: TRAILS & TRADITION (D2T) PROJECT

Diber's official tourist information center is open year-round. It is conveniently located on the second floor of the Culture Palace, which is situated along the Linden tree-lined pedestrian boulevard. The Tourist Information Center was opened by the LAG "Dibra Turistike" and Diber Municipality, to provide visitors with a reception and information service and improve their first impression of the region. Inside visitors will find friendly and knowledgeable staff who can help them discover local restaurants, book lodgings, and explore the many attractions and tours Diber has to offer!

To enable this first contact with the region, the Tourist Information Center gives visitors a personalized service through the tourist informers who provide the information, brochures and plans visitors need, in a variety of languages.

TOURIST INFORMATION CENTER



DESCRIPTION OF THE SETA - LURA LAKES

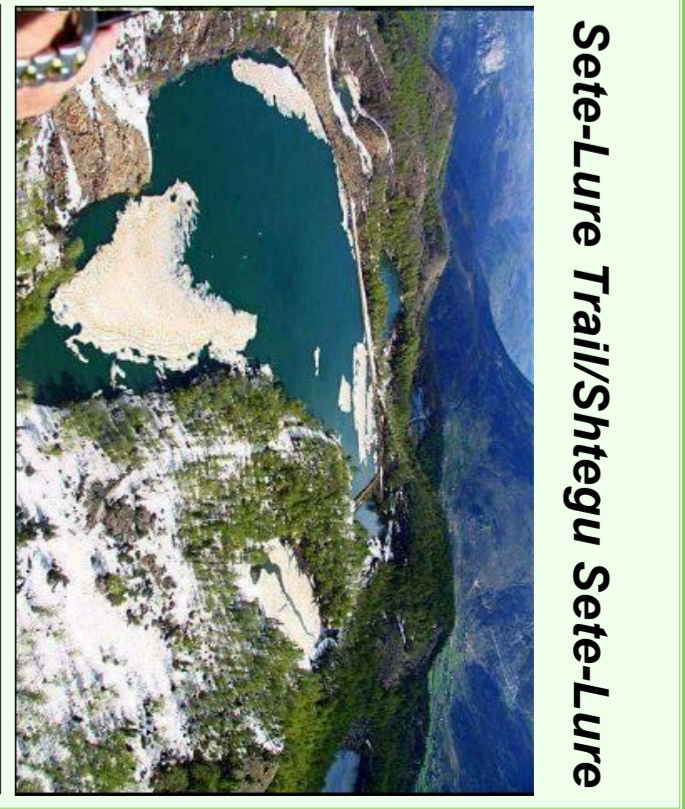
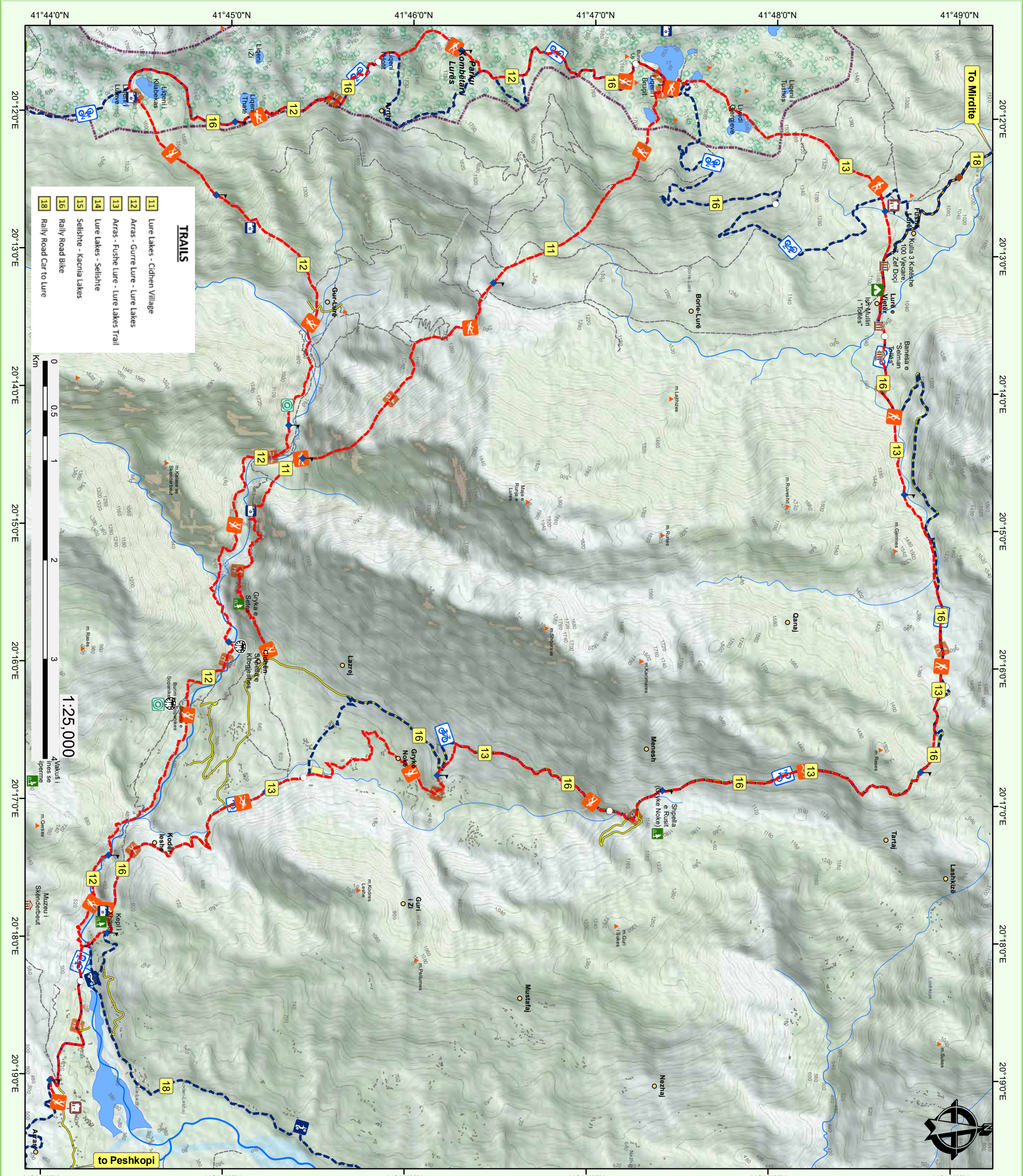
There are 17 glacial lakes, 7 in Lura National Park and 10 in Kacni, which is part of the territory of Selishtë and Klos. Is a miracle to explore among forests and mountains, with great study value and great scenery. During this tour, you will be able to explore the villages surrounding, Lura National Park and Selishtë as well as the forests of Balgjaj, Kacni, and Seta river that are a continuation of Lura Park. In addition to the stunning nature, you will see the traditional style architecture of the high carved stone towers and landscaped courtyards with wood fences, plus you can enjoy traditional Albanian hospitality and special local products such as cheese and honey.

This tour provides tourists with the opportunity to visit the historic sites and learn about George Kastriot Skanderbeg, Albania's National Hero. The Skanderbeg Museum is located in Sinë village and houses numerous topologies, traditions, legends of the Kastrioti family. Nearby is the village of Kastriot, which was named after the Kastriot family. Skanderbeg's birthday coincides with St. George's Day and both are celebrated together.

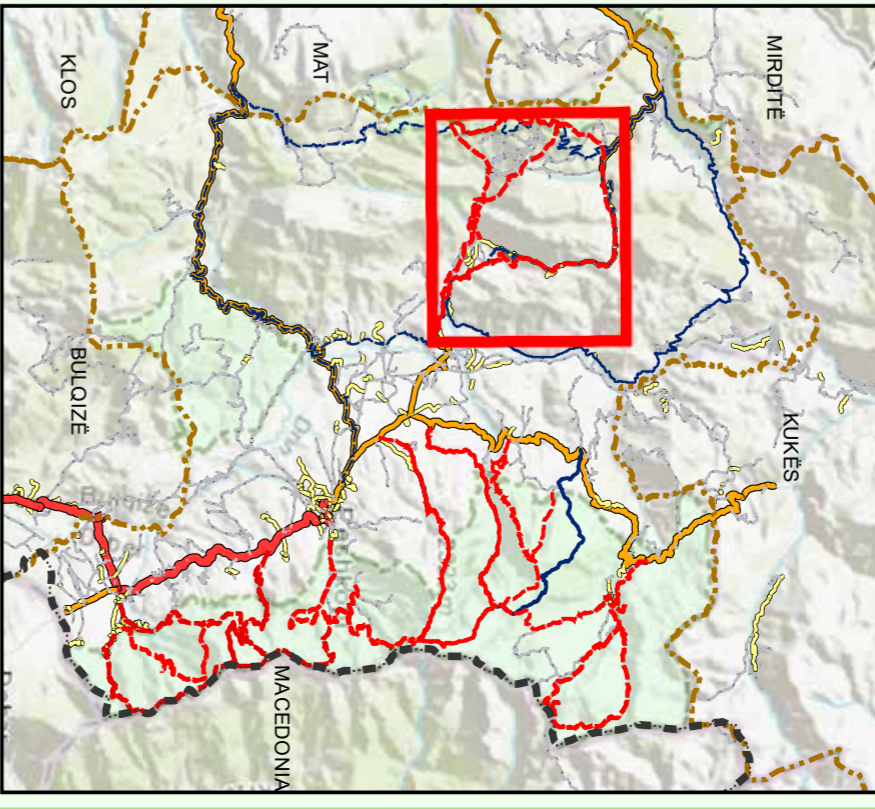
LURA NATIONAL PARK

This is a national park in northeastern Albania, spanning an area of 12.8 km² (4.9 sq mi) with an altitude that varies from 1500- 2300m. The park was established in 1966 to protect the various ecosystems and biodiversity. The most common tree native to the park is the European beech along with silver fir, Balkan pine, black pine, red pine, and Bosnian pine. The Balkan pine is a protected species because it's native only to the west Balkan Peninsula and is threatened with extinction. In addition to the trees, there are twelve glacial lakes and each one is named after a distinct characteristic. The European brown bear, eurasian lynx, eurasian wolf, roe deer, and red squirrel all call this park their home. In the 1990s, the park suffered from extensive deforestation with almost half of the park losing trees. Currently, the Albanian government and several NGOs are working to revitalize the park.





Sete-Lure Trail/Shtegu Sete-Lure



Legend/Shtjegues

Hiking Trail/Shteg Ecle	Waterfall/Ujevare
Off-Road 4x4/ Rruge e Pashtruar 4x4	Thermal spa Center/Likha
Trail Marker /3km	Cave/Shtepelle
Bike Marker /5km	Mt Peak/Majë Mali
Off Road Car Marker /5km	Cultural Monument
Camping Site/ Vend Kampingu	Road/Rruge
Guest House/Shtepi Pritese	Primary/Nacionale
View area Photo Spot/Pike Vrojtimi	Secondary/D/Yesore
Natural Monument/Monument Natyre	Residential/Residenciale
Cold Spring/Burim Uji	Others/Te Tjera
	Lakellqen
	Protected Area

Diber: Trails & Tradition - D2T

Financed by:

Implemented by: