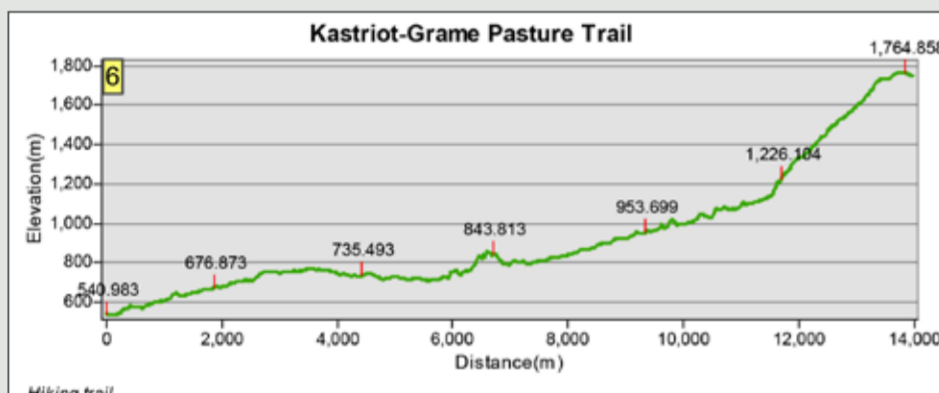


Sohodoll-Grame Pasture Trail
 Time Duration: 6-7h (One way) Level: Moderate Length: 18.8 km

Sohodoll-Grame Pasture Trail

The 18.8 km trail begins at the village of Sohodoll and ends at Grame Pasture. The hike should take approximately 6-7 hours and the level of difficulty is rated as moderate. Points of attraction include: The tower of Reshit Zuna in Sohodoll and the Voles castle ruins in Vrenjt village. After passing through Vrenjt, the hiking becomes more strenuous while climbing the rocky terrain of Shllinasi. After two more hours, the trail leads to the Ladies Pasture, located at 2300m above sea level, where there are views of Peshkopi and the Curative Valley on one side and Mt. Korabi on the other side. Continuing on through Ladies Pasture, the trail leads to Grame Lake providing a lovely spot to rest and have a picnic. The hiking trail continues on to Radomire and Mt. Korab or you may turn back.



Kastriot-Grame Pasture Trail
 Time Duration: 4h (One way) Level: Hard Length: 14 km

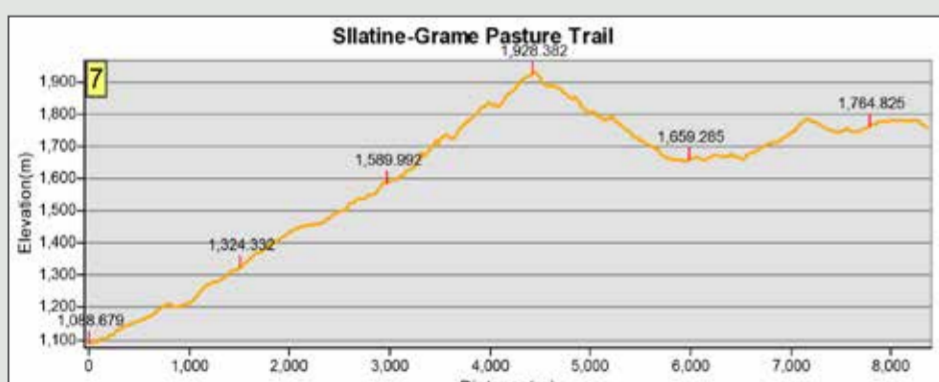
Kastriot-Grame Pasture Trail

The 14 km trail begins at Chestnut Hill (Kodra e Geshtenjes) in the village of Kastriot and ends at Grame Pasture. The hike should take approximately 4 hours and the level of difficulty is rated as hard. For the first 1.5 hours of hiking the trail is easy. The remaining length of the trail is more difficult as it leads to the Ladder of Rrafmane (Shkalla Rrafmane) and then to Grame Pasture and Lake. Along the way, enjoy the beautiful scenery and points of attraction such as White Mountain and Grame's Mirror, which is rockface made of selenium that sparkles in the sun.



Grames' Lake

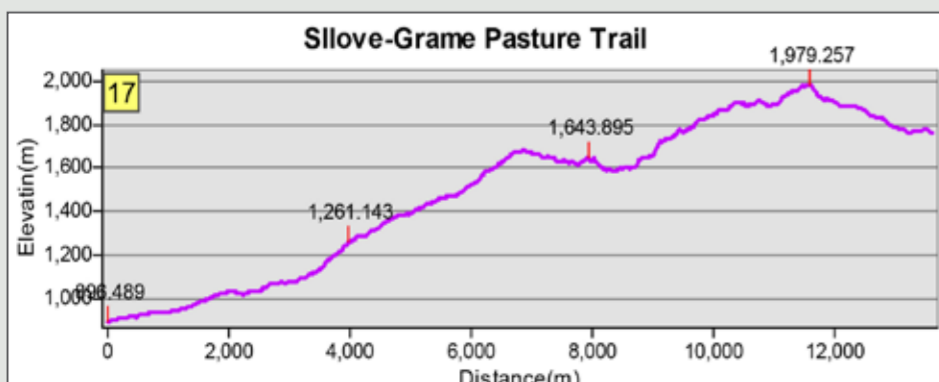
Lake of Grame is found in the Grame Mountain, situated in the eastern Korab Mountains. It is a glacial lake with very cold and crystal clear water. Its surface freezes during winter. It is also the largest (5 ha) and deepest lake within the mountain range. The lake is located 1750 meters above sea level. The shores are steep and rocky. It takes water from rainfall and snowfall. The biggest amount of water can be observed in the late spring, which is due to melting of the snow on the surrounding peaks



Slatine-Grame Pasture Trail
 Time Duration: 3-4h (One way) Level: Moderate Length: 8.3 km

Slatine-Grame Pasture Trail

The 8.3 trail begins at the village of Slatine and ends at Grame Pasture. The hike should take approximately 3-4 hours and the level of difficulty is rated as moderate. The trail leads to Pelpeniku peak and the hiking becomes more strenuous while climbing the rocky terrain. Points of attraction such as White Mountain and Grame's Mirror can be seen along the route



Silove-Grame Pasture Trail
 Time Duration: 4h (One way) Level: Moderate Length: 13.6km

Silove-Grame Pasture Trail

The 13.6 km trail begins at the memorial statue of Silove and ends at Grame Pasture. The drive should take approximately 4 hours, while the hike should take up to 8 hours following the same path and the level of difficulty is rated as moderate. Points of attraction such as White Mountain, Grame's lake and Grame's Mirror can be seen along the road.

NATURAL AND CULTURAL ATTRACTIONS



Zuna Tower
 Built in 1827, the residence of Reshit Zuna, also known as Zuna Tower, is located in the village of Sohodoll. The tower is four stories high and built with stones totaling 11 m in height, while the width of the tower walls is 1 m. The tower's gate is 1.6 m tall and 0.96 m wide. There are seven windows many with iron bars and their dimensions are 1 m x 0.7 m.



Shllinasi
 This rocky cliff of stone salt is located near the village of Vrenjt at approximately 1200-1500 m above sea level in the White Mountain. It's 200 m high and 250 m wide and is popular with goat herds that can be seen licking the salt.

The Ladies Pasture

Located close to Mount Korab northeast of Peshkopi and situated 1700 m above sea level. It constitutes a big glacial slope, which is formed in schist, 1000 m long and 100-180 m wide. It has an irregular quadrilateral form and a big natural balcony. It is rich with herbaceous vegetation (alpine pastures) that are used continuously by herds for grazing. It can be visited if you follow the trail from Peshkopi to the villages in the northeast and then walk along the northwest slope of Korab-Deshat range.



Zimur Pasture

Located within the Korabi mountain range at 1700 m above sea level. It consists of a natural alpine grassy balcony that is 1000m long and 100-180m wide. It is rich with herbaceous vegetation (alpine pastures) that are frequently used by animals for grazing purposes.



White Mountain's Karst

This rocky cliff face, which is comprised of gypsum, was formed during the Permian and Triassic Periods. A wonderful landscape was formed with a dominant white color and includes a few relatively unexplored caves.



Grame's Mirror

Located in Grame Mountain at 1900m above sea level, this rock face is comprised of selenium that reflects light and appears to glow. It is 500m in length and 200m wide.



Source of Vlesha's Cold Water

This cold water source is located near the village of Vlesha and is 800m above sea level. The cold, clean water flows through the limestone and schist rock



Grame Pasture

Located near Slatine village and situated at 1800m above sea level, this pasture is 1200m long and 230m wide. Within this pasture, locals know as: Dyqakë Pasture and Shehi Pasture, and they are among the biggest and most beautiful, with numerous water sources and plants.



Camping in Grame

Professional guides are available for all trails in the Diber region. Guesthouses and camping grounds are located near the trails. Please contact the TIC for an up-to-date list of guides and specialty accommodations.



GRAMA PASTURE



plans visitors need, in a variety of languages. To enable this first contact with the region, the Tourist Information Center gives visitors a personalized service through the tourist informers who provide the information, brochures and them discover local restaurants, book lodgings, and explore the many attractions and tours. Diber has to offer! Municipality, to provide visitors with a reception and information service and improve their first impression of the region. Inside visitors will find friendly and knowledgeable staff who can help them discover local restaurants, book lodgings, and explore the many attractions and tours. Diber's official tourist information center is open year-round. It is conveniently located on the second floor of the Culture Palace, which is situated along the Linden tree-lined pedestrian boulevard. The Tourist Information Center was opened by the LAG "Dibra Turistike" and Diber Municipality. The Tourist Information Center is a reception and information service and improve their first impression of the region. Inside visitors will find friendly and knowledgeable staff who can help them discover local restaurants, book lodgings, and explore the many attractions and tours. Diber has to offer! To enable this first contact with the region, the Tourist Information Center gives visitors a personalized service through the tourist informers who provide the information, brochures and plans visitors need, in a variety of languages.

ABOUT, DIBER: TRAILS & TRADITION (D2T) PROJECT

Thanks to the "Tourism as a Leading Edge" Program, in March 2017, the Albania Local Capacity Development Foundation (ALCDF) partnered with the Municipality of Diber and the Local Action Group, Diber Turistike, to implement "Diber: Trails & Tradition" (D2T), a \$750,000 grant funded by USAID in collaboration with the Swedish Embassy in Tirana. The three-year project's aim is to develop sustainable tourism in the Diber region of Albania by focusing on its three strategic objectives: (1) to strengthen the enabling environment; (2) to increase the workforce capabilities; and (3) to design, develop and promote integrated agritourism products. By April 2020, D2T envisions an increase in employment and incomes based on an increased number of tourists in Diber and the quality of their experience. Through partnerships with businesses and local government, the project works on developing and market eco-friendly, natural, cultural and agro-tourism attractions, such as hiking and biking trails; improve traditional guesthouses and villages; introduce self-sustaining energy and waste management systems; improve tourist infrastructure; and train local tour guides.

TIC - TOURIST INFORMATION CENTER



TIC - Tourist Information Center
 +355 218 24 221 / +355 67 384 0099
 e-mail: tcdiber@gmail.com

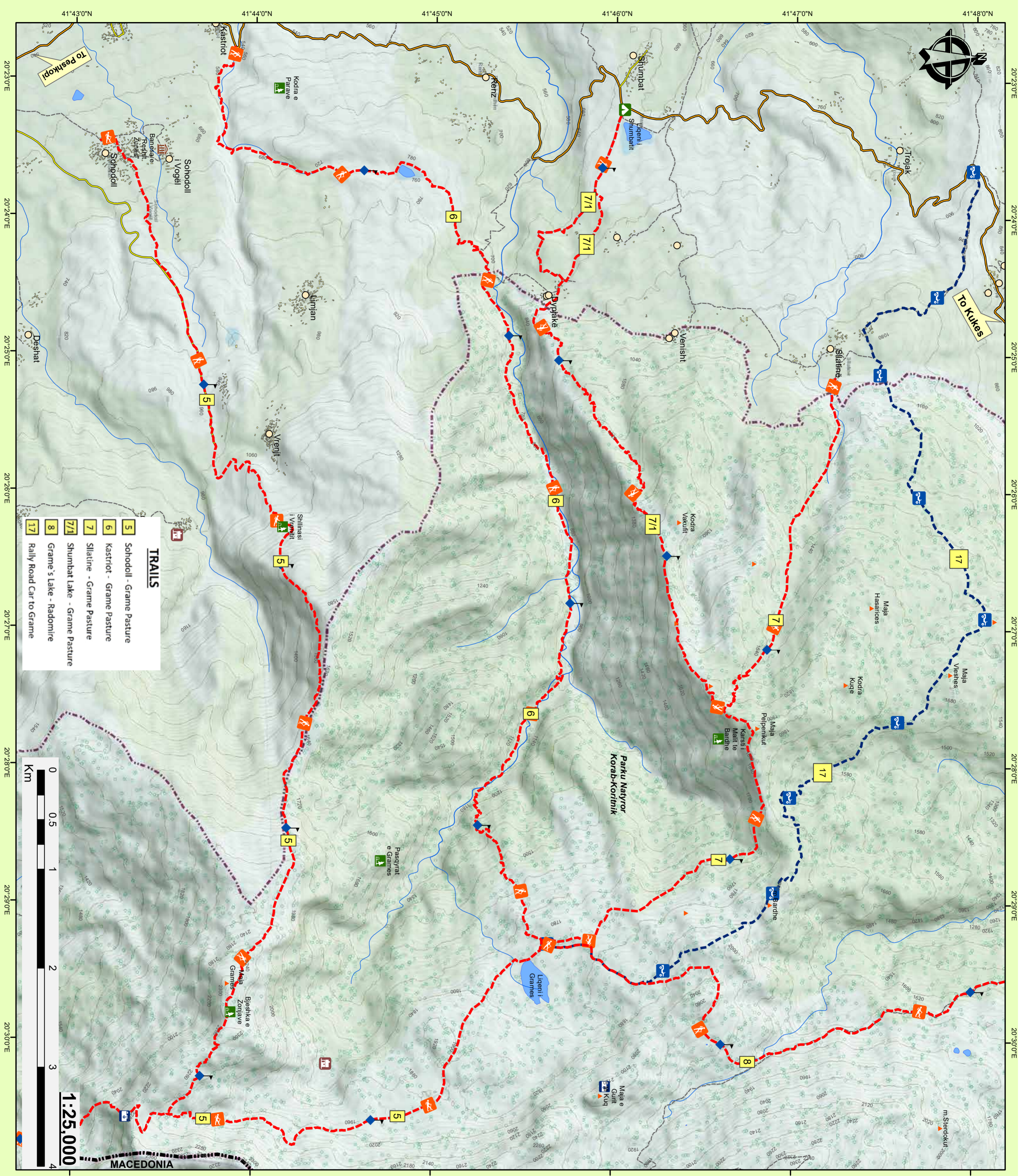
DESCRIPTION OF MOUNTAIN TRAIL OF GRAMA

Endless highland pastures, alpine trees, and a beautiful mountain lake that faces the White Mountain and Grama's Mirrors, with cottages and crystal-clear springs, Grama is a magical mountain destination, located 9 km away from Peshkopi. Cottages and camping sites offer food and accommodation but also tourist activities such as hiking, fishing, hunting, horseback riding. Grama is accessible by several routes. On foot, visitors can hike from the village of Kastriot or from Shumbat village. By car, visitors can travel to Grama from Peshkopi to the villages of Bahute or Zimur (40 minutes), then hike to Grama (2.5 hours). And by off-road vehicle, visitors can reach Grama via the village of Slatina (1.5- 2 hours).

KORAB-KORITNIK NATIONAL PARK

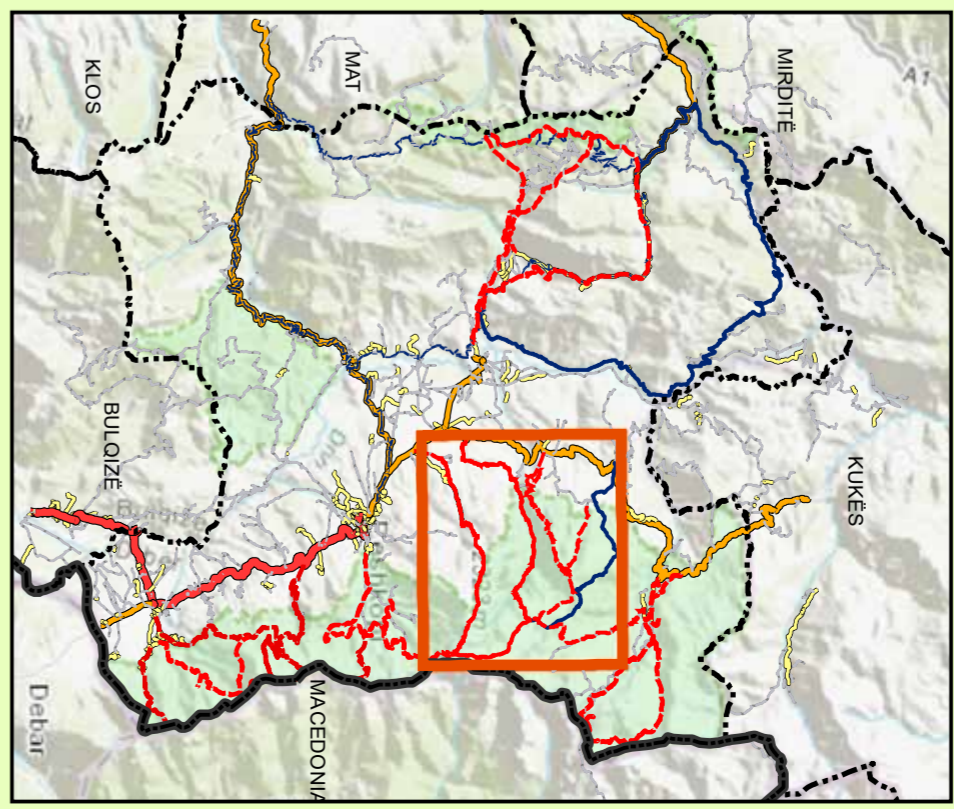
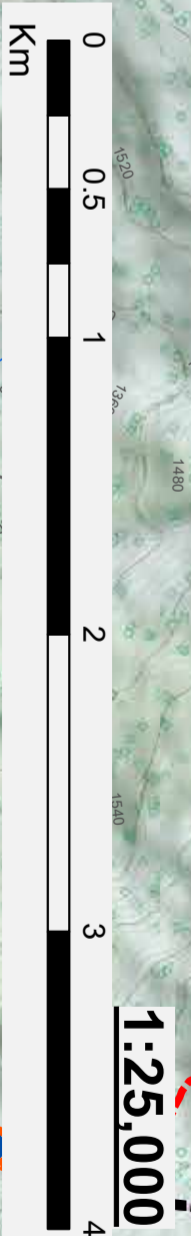
This park includes a large territory in the two neighboring districts of Diber and Kukes with a total area of 55,550.2 hectares, of which in Diber covers an area of 20,663.4 hectares. This park consists of a high-value biodiversity with many species of trees such as pine, arnuts, fir, simple and mixed beech, oaks, hazelnut, etc. In addition to the many varieties of trees, the grass pasture vegetation is among the richest, not only in Albania but for the Balkans. The biodiversity values of this area are also enhanced by the presence of large protected mammals such as the bear (Ursus arctos), the wolf (Canis lupus), the goat (Rupicapra rupicapra), the deer (Capreolus capreolus), and the lynx (Felis lynx). This park includes 17 natural monuments





TRAILS

5	Sohodoll - Grame Pasture
6	Kastriot - Grame Pasture
7	Silatine - Grame Pasture
7/1	Shumbat Lake - Grame Pasture
8	Grame's Lake - Radomir
17	Rally Road Car to Grame



Legend/Signposts

	Urban area/Zone urbana		Hiking Trail/Signpost Edge
	Cultural Monument/Monument Kulture		Markmet
	Natural Monument/Monument Nature		Off-Road 4x4/ Rouge e Pashtuar 4x4
	View area Photo Spot/Plce Vojinini	Road/Ruge	
	Camping Site/ Vendi Kampingu		Primary/Nacionale
	Guest House/Shepi/ Pritese		Secondary/Dyvesse
	Cord Spring/burum Uji		Residential/Residenciale
	Waterfall/Jevarc		Other's Tra
	Thermal Spa Center/Lixha		Lakeligen
	Cave/Shipile		Mountain Bike Trail/Shepi Bikelash Mail
	Mtn Peak/Klajpe Mail		Protected Area/Zone e Mbrojtur

Diber: Trails & Tradition - D2T

Financed by:



Implemented by:



**Kastriot-Grame Trail
Shegju Kastriot-Grame**

